

Rigidity-Aware Detection for 6D object Pose Estimation



Yang Hai¹



Rui Song¹



Jiaojiao Li¹



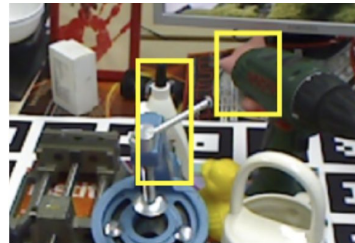
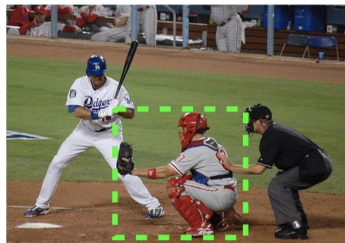
Mathieu Salzmann²



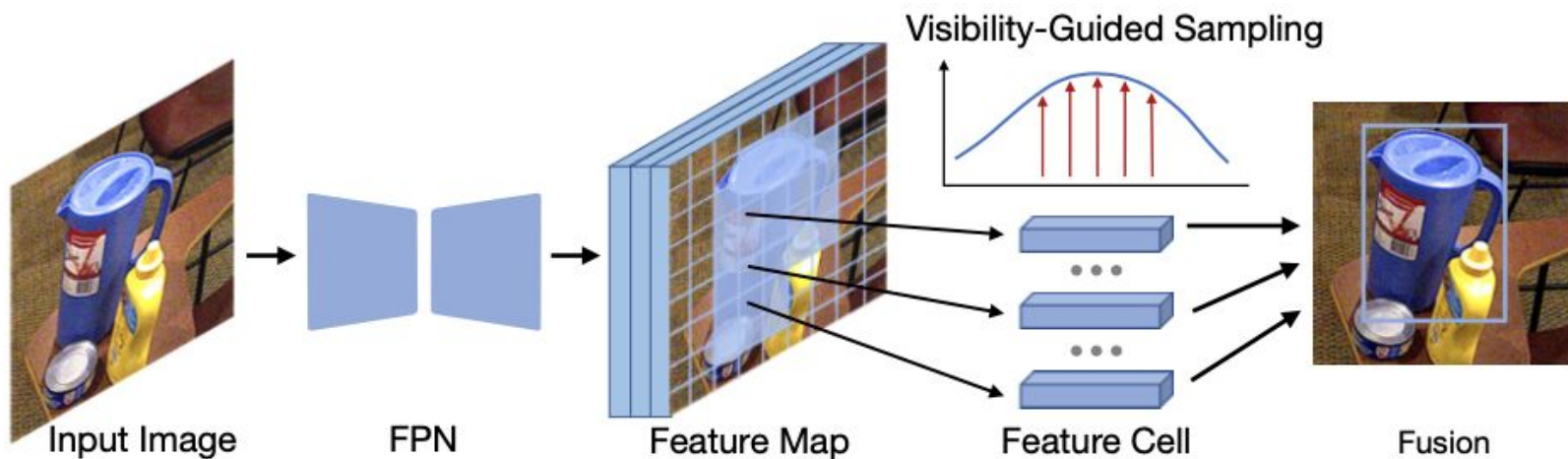
Yinlin Hu³

¹Xidian University, ²EPFL, ³Magic Leap

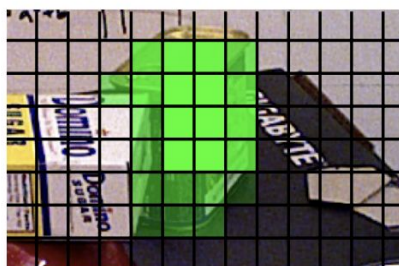
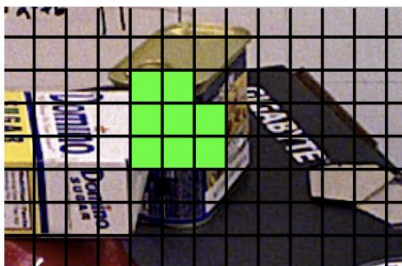
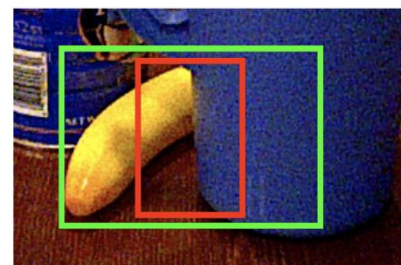
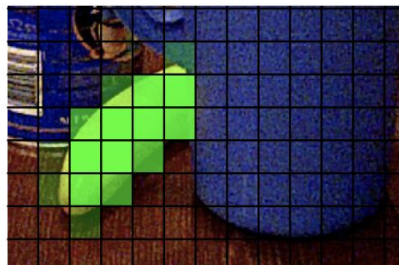
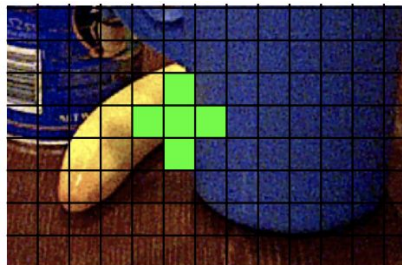
The problem



The overall architecture





The sampling strategy is the key



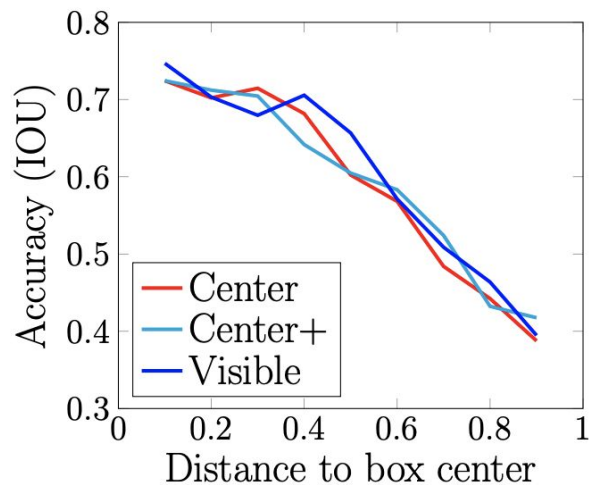
(a) Baseline strategy

(b) Our strategy

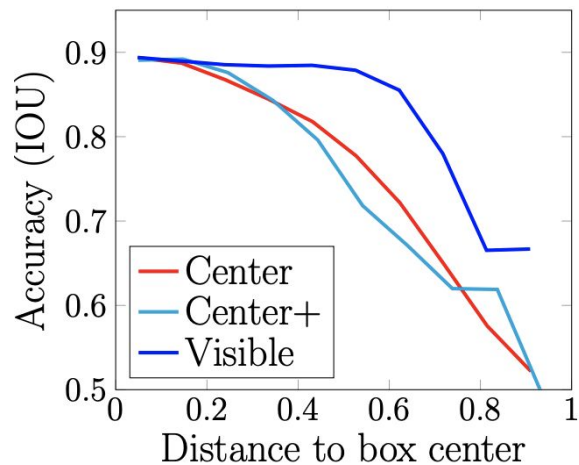
(c) Detection results

 : Our strategy
 : Baseline strategy

Analysis of rigidity in object detection



(a) General (COCO)

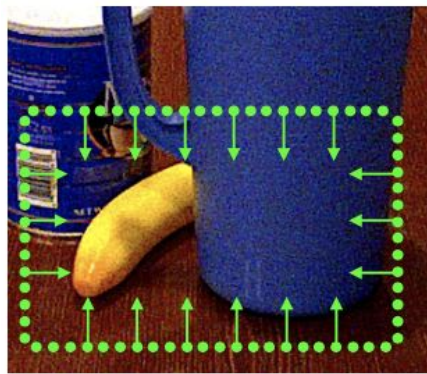


(b) Rigid (YCB-V)

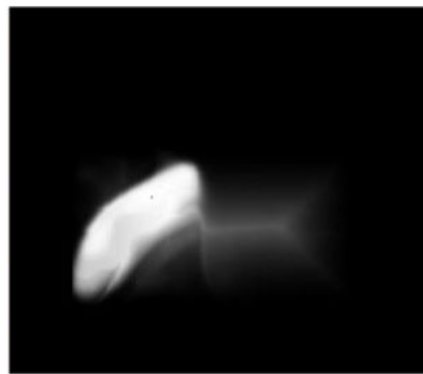
Visibility-guided sampling



(a) Initial seeds



(b) Seeds growing



(c) Distance map

Fusion during inference

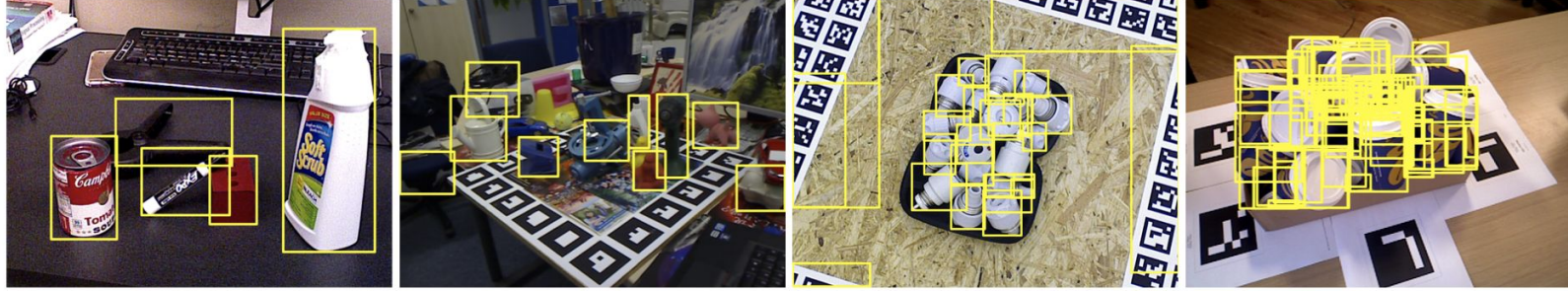


(a) The standard strategy

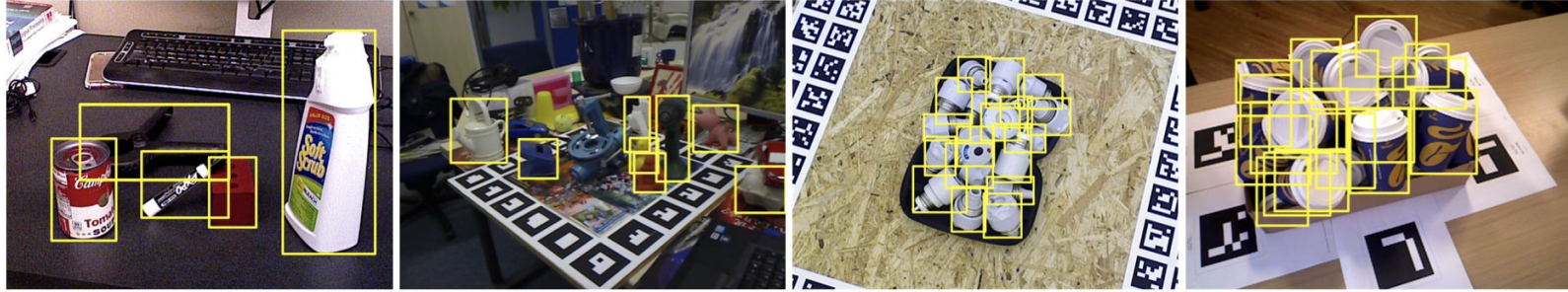


(b) The proposed strategy

FCOSv2



Ours



Pose



Thanks

Code



Paper



				Method	Real	Data	Avg.			
				PFA+Ours		RGB	0.658			
				PFA [15]		RGB	-			
				SurfEmb [9]		RGB	0.650			
				CosyPose [23]		RGB	0.570			
				CDPNv2 [26]		RGB	0.472	HB*	YCB	Avg.
Method	Real	Data	LM	Method	Real	Data	Avg.	HB*	YCB	Avg.
PFA+Ours		RGB	0.5	PFA+Ours	✓	RGB	0.704	0.840	0.648	0.658
PFA [15]		RGB	0.6	PFA [15]	✓	RGB	-	-	0.614	-
SurfEmb [9]		RGB	0.6	SurfEmb [9]	✓	RGB	0.677	0.791	0.647	0.650
CosyPose [23]		RGB	0.6	CosyPose [23]	✓	RGB	0.637	0.656	0.574	0.570
CDPNv2 [26]		RGB	0.6	CDPNv2 [26]	✓	RGB	0.529	0.722	0.390	0.472
PFA+Ours	✓	RGB	0.5	PFA+Ours		RGBD	0.762	0.840	0.806	0.704
PFA [15]	✓	RGB	0.6	PFA [15]		RGBD	-	-	0.748	-
SurfEmb [9]	✓	RGB	0.6	SurfEmb [9]		RGBD	0.758	0.791	0.711	0.677
CosyPose [23]	✓	RGB	0.6	CDPNv2+ICP [26]		RGBD	0.534	0.656	0.821	0.637
CDPNv2 [26]	✓	RGB	0.6					0.722	0.532	0.529
PFA+Ours		RGBD	0.5	PFA+Ours	✓	RGBD	0.787	0.869	0.826	0.762
PFA [15]		RGBD	0.5	PFA [15]	✓	RGBD	-	-	0.804	-
SurfEmb [9]		RGBD	0.5	SurfEmb [9]	✓	RGBD	0.773	0.866	0.799	0.758
CDPNv2+ICP [26]		RGBD	0.6	CIR [30]	✓	RGBD	0.741	0.712	0.532	0.534
				CosyPose+ICP [23]	✓	RGBD	0.698			
PFA+Ours	✓	RGBD	0.5	CDPNv2+ICP [26]	✓	RGBD	0.568	0.869	0.888	0.787
PFA [15]	✓	RGBD	0.751					-	0.823	-